

Innovation and practicality is in our dna

www.motsegroup.co.za



MOTSE
Africa
Group

COMPANY PROFILE



Empowering you to achieve

Our social responsibility programme is about educating our community; Motse Group has donated laptops to Class 2015 passed Matriculants from different schools around Free State.



CONTENT

Empowering you	02
.....	
An Overview	04
.....	
Our Mission	05
.....	
Our Services	06
.....	
Mining	07
.....	
Plant Hire	08
.....	
Building Construction & Development	09
.....	
Our Services to Community	10
.....	
Company Core Values	11
.....	
Safety Policy	12
.....	
Environmental Policy	13
.....	
Quality Policy/General	14
.....	
Company Structure	15
.....	
Personnel	16
.....	
Plant & Equipment	17
.....	
Our Projects	18
.....	
Our Clients	20
.....	
88 Chemmotse	21
.....	
Notes	22
.....	



An overview of who we are

Motse Civils and Plant Hire (Proprietary) Limited was formed and incorporated as Private Company under the Companies Act, 2008 (Act No. 71 of 2008). The company was incorporated on the 13th of June 2014 here in Welkom. The Company was incorporated with a single class of shares of 1000 ordinary share capital which are subscribed fully by the shareholders.

Motse Group is a 100 percent black Owned company that employs skilled and service orientated personnel committed to the provision of optimum sustainable solutions.

We primarily focus on getting involved in small to medium sized mining projects nationally, with substantial growth potential, in the process of expanding the group. We strive to add value via a holistic integrated approach, assisting the development process as an integrated development partner.

With our broad exposure across the infrastructure value chain, the Group has the capacity to deliver multi-disciplinary projects

in Municipal Services, Water Supply Services, Roads Maintenance, Storm Water, Mining, Construction Project Management Services, Transportation, Logistics and Plant hire. Motse Group has grown and continues to grow at a rate exceeding the expectations of its founders.





Our Mission

The Company's mission is to render high quality services in the following industries: this includes amongst others but not limited to: -

- Mining
- Construction management and Project;
- Civil Engineering;
- Plant Hire and Logistics;
- Storm Water; and
- Water services
- IT infrastructure set up, technical support, accessories and equipment supply
- Perishable and non-perishable foods, and Milling.

Our Vision

Our vision is to be a highly respected, world-class, construction, mining and project management organization by achieving extraordinary results for our customers, building satisfying careers for our people, and earning a fair return on the value we deliver. We aim to be the best in the business. The Company is also aiming to become the largest, most comprehensive company that provides reliable service to the customers. The Company has formulated its vision to become a leading company in product diversification in the market. Its business and development plans are there aimed at positioning the Company to capture the potential growth of these industries.

Amongst other things our vision aims:

- To sustain our rapid economic growth towards becoming a leading BEE company in Africa as a whole.
- To excel in all our diversified services sectors of construction, Mining and Project Management
- To create employment as a dignified local entrepreneur and assist the government with poverty eradication



Our Services

Civil Engineering and Projects

The business unit deals with all civil construction and related projects. The organization is currently registered with Construction Industries Board of South Africa (CIDB) and graded 6CEPE. Our goal is to progress to 8CEPE by mid-2018 and ultimately 9CEPE by 2020.

Services under this business unit includes but not limited to the following.

- Road Construction
- Road Maintenance
- Water Reticulation
- Water Sanitation
- Water Storage
- Waste water treatment
- Waste metering and loss management services
- Storm water and sub-surface
- Bulk earthworks
- Mass concrete works
- Rehabilitation

Ordinarily, civil works constitute the backbone of any infrastructure development venture and

as such Motse Civil is correctly positioned to work with clients from this foundation stage. Building Construction and Development

Motse Civil and Plant Hire is Graded 7GBPE and aims to elevate by mid-2018. Motse collaborated with large construction companies and experts in different specialist fields where sizable projects are targeted.

We are engaged in construction of various buildings such as

- Low cost housing
- Schools
- Libraries
- Clinics
- Public and school halls
- Residential
- Commercial buildings

For turnkey solutions, Motse collaborates with architectural firms for tailor made client requirements.

Mining Services

Motse Civil and Plant Hire provides mining clients across Southern Africa with professional engineering services in the fields of open cast contract mining, bulk material handling and waste residue disposal and recovery facilities. Our services include the provision of professional personnel, staff, plant and equipment as well as a wide range of associated design capabilities.

Our skilled team of engineers, designers and support staff are based at our group's head office in Kroonstad. Our operation teams are based at mining operations in Free State and Northern Cape Provinces.

Our divisions include Contract Mining, Material Handling, Tailings Operations and Technical Services. We combine the capabilities of these four divisions to offer clients across the mining sector a comprehensive turnkey solution. Our turnkey mining services portfolio includes the establishment of fit-for-purpose mining solutions from initiation, through implementation to operations and closure. This one-stop shop solution includes feasibility; detail design, fabrication, construction and commission of all the necessary mine infrastructure; pollution control features and beneficial plant; material handling, open pit mine design and planning, contract mining and operational management of mining activities.

Contracts Mining

- Open pit mine design, planning and optimization
- Fleet Simulation and selection
- Contract mining
- Crushing and screening
- Mobile Crushing plant
- Drilling and blasting
- Rehabilitation and closure

Materials Handling

- Energy coal processing
- Dry Coal Separation
- Plant and terrace activities
- Raw Material and product handling
- Crushing and screening
- Stockpile and dump management

Tailings Management

- Design solutions and construction management
- Waste facility operations and management
- Rehabilitation and closure

Technical Services

- Design and construction of mine infrastructure
- Feasibility studies and conceptual designs
- Slurry transport systems and Dam Construction
- Multi-layered lining systems
- Contractual documentation
- Project management





Plant Hire

We provide earthmoving equipment hire to Contractors, Quarries, Mines, Government, Local Government and Industry

Our commitment to a healthy and safe working environment is above the standard required for compliance to work on major projects. Over the past twelve months we reviewed and developed our OH&S system to demonstrate our commitment to providing a safe working environment for our staff and machinery operators on-site and in the field.

Our Plant Hire Services

- Excavators
- Dozers
- Rock Breakers
- Front End Loaders
- Graders
- Water Tankers
- Articulated Dump Trucks
- Compactors
- Operators





Building Construction and Development

Motse Civil and Plant Hire is Graded 7GBPE and aims to elevate by mid-2018. Motse collaborated with large construction companies and experts in different specialist fields where sizable projects are targeted.

We are engaged in construction of various buildings such as

Low cost housing

- Schools
- Libraries
- Clinics
- Public and school halls
- Residential
- Commercial buildings

For turnkey solutions, Motse collaborates with architectural firms for tailor made client requirements.



A young boy with short dark hair, wearing a red shirt, is drinking water from a public tap. He is holding the tap handle with his right hand and cupping his hands under the running water. The background is blurred, showing other people in a community setting. The overall tone is warm and focused on the importance of water access.

I Our service to our community

Our services plays a big role in our community and Motse Africa Group is dedicated in delivering those services not only to its clients, but bringing clean, accessible water to communities in areas of Free State. Our dream is to help our communities to create solutions to manage available water and

see them use water to escape droughts. Motse Africa Group is committed to supporting local communities in accessing the water they need so that their lives can be productive, fruitful, and filled with opportunities.

Company Core Values

Our values have one common objective, to achieve excellence in all that we do. To realize our objective, we must work as a team and communicate clearly so that every decision is made with a purpose.

Our Core Values:

- **Trust**

We earn trust from each other, consumers, and business partners with our competence, honesty and integrity.

- **Involvement**

We are enthusiastically involved in proactive change to create sustainable and profitable growth.

- **Respect**

We respect and care for our people and their diverse cultures, religions and traditions.

- **Pride**

We feel proud in passionately building successful brands through our people and the quality of all our activities and services.



Company Shared Values

- **Loyalty**

Loyal to the Nation and the Company

- **Professionalism**

Committed Innovative and Proactive and always striving for excellence.

- **Integrity**

Honest and upright



Safety Policy

Motse Africa Group pledges itself to maintaining a healthy working environment that is safe to its staff, sub-contractors, clients and the public in accordance with the Mine Health and Safety Act 29 of 1996 and Occupational Health and Safety Act 85 of 1993 as amended from time to time.

Motse Africa Group commits to ensuring:

- A working environment that is conducive to health and safety standards,
- The general well-being of employees while at work,
- The prevention of work-related injuries and work-related fatalities,
- The investigation of the causes of work related injuries and work related fatalities,
- The rehabilitation of people who have suffered work-related injuries.





Environmental Policy

Maintaining responsible environmental stewardship is another essential stepping-stone to our long-term success. Our integrated HSE (Health, Safety and Environment) policy ensures that we are committed to Zero Harm to our people and minimal adverse impact on the environment. At each and every stage of our operations, we strive to promote the efficient use of resources, the reduction and prevention of pollution and the enhancement of biodiversity protection.

We are committed:

- To utilizing and adhering to the best engineering practices that comply with National Environmental Management Act 107 of 1998, as amended from time to time, as well as other environmental acts that are formulated in other countries that we may do projects in,

- To continually educate our staff about the importance of conserving the environment,
- To sub-contracting contractors who are committed towards the implementation of ISO14001 Environmental Management Systems (EMS),
- To prevent pollution and to provide aesthetically pleasing engineering solutions.



Quality Policy

Motse Africa Group will at all times strive towards providing its clients with quality service that meets or exceeds customer expectations.

We will continually benchmark ourselves against leading service providers to ensure that we deliver the best technologies that the market has to offer.

General

Risk management

The company has developed an integrated risk management to address all risks associated with the normal running of the company. For instance, the company has ensured that all equipment and valuable assets are insured against fire, theft and vandalism.

Risk management (financial and commercial) Prudence Policy

Dividends will only be paid when substantial amount of external capital commitments have been met and the liquidity and financial leverage of the company is maintained.

Capital Commitments and Contingent Liabilities

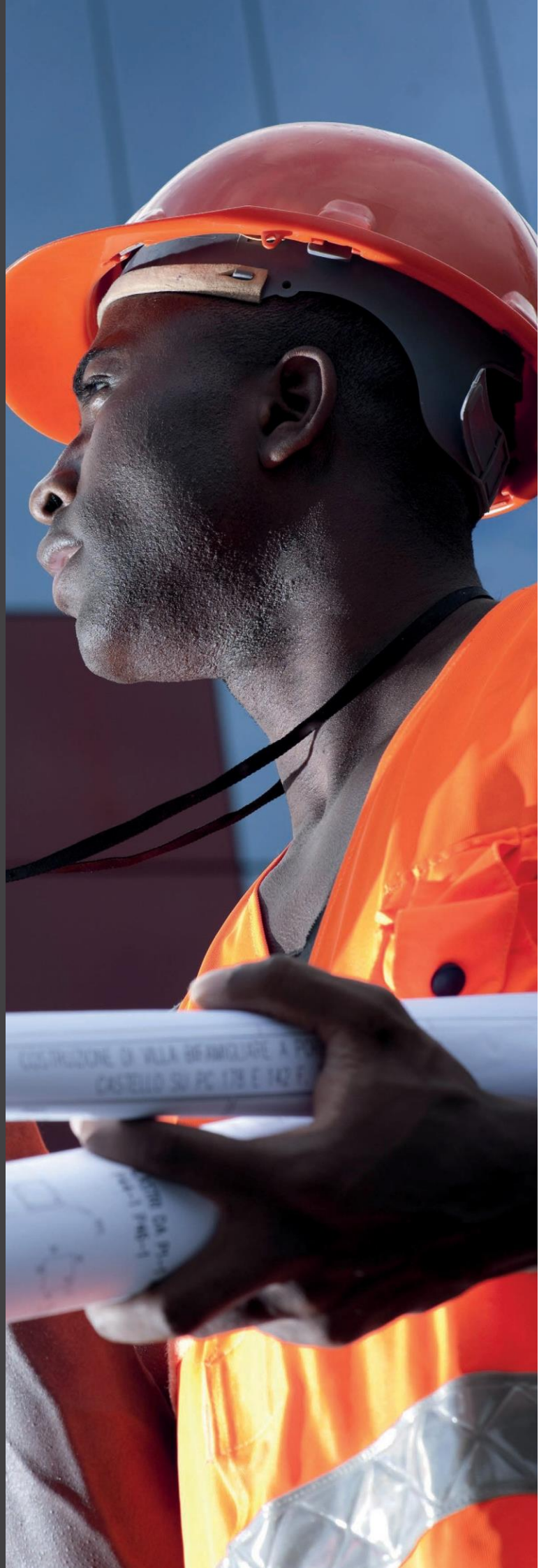
The Company and the shareholders had certain capital commitments at the date of this profile, which are deemed to be confidential. The Company had no contingent liabilities as at the date of this profile.

Litigation Statements

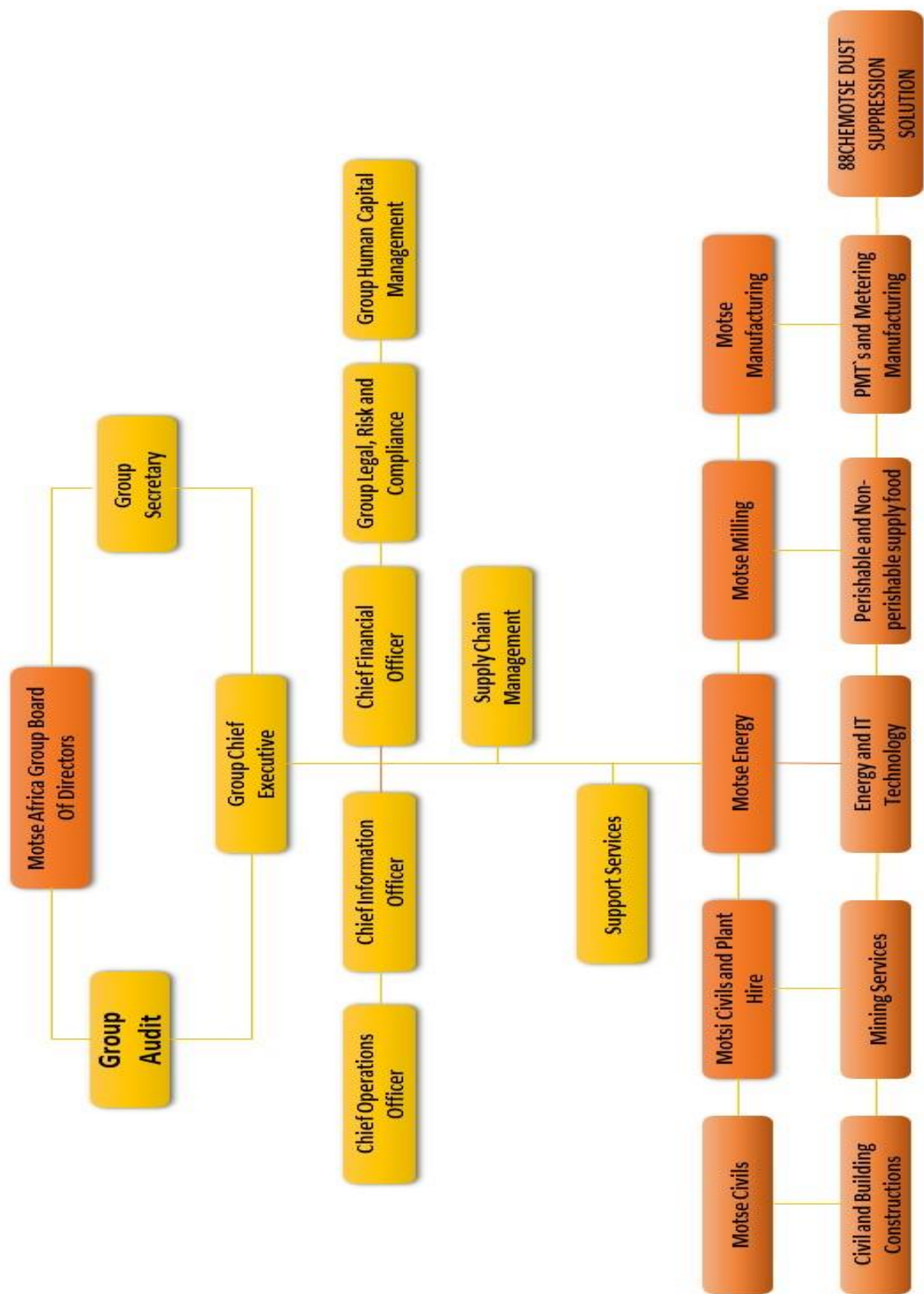
There are no legal proceedings pending against the Company and the shareholders as at the date of this profile that can impact negatively on the operations of the Company. Neither the Company is pursuing any legal proceedings against any other person.

Pre-incorporation Contracts

The Company had no pre-incorporation contracts entered into for the benefit of another company or any person.



Company Structure





Personnel

Motse Africa Group employs skilled and service orientated personnel committed to the provision of optimum and sustainable

solutions. The current composition of the workforce complement is as follows:

Directors

- 03

Manager

- 06

Other Support Workforce

- 178

Supervisors

- 10

Total

- 197



Plant and Equipment

• 9x 740 CAT Dump truck	Good Condition
• 3x CAT TLB (4x4) (Consolidated)	Good Condition
• 1x CAT 325 Excavator	Good Condition
• 1x CAT D7 Dozer	Good Condition
• 3x CAT966 Loaders	Good Condition
• 4x 18000L Mercedes	Good Condition
• Actros water trucks	Good Condition
• 4x 6cup tipper truck	Good Condition
• 1x Tata 28-Seater Bus	Good Condition
• 4x 10cup tipper truck	Good Condition
• 8x 40-ton Volvo Dump trucks	Good Condition
• 4x 740B CAT Dump trucks	Good Condition
• 1x Motor Grader	Good Condition
• 2x Volkswagen Gafter 22 Passengers	Good Condition
• 12x LDV (site bakkies)	Good Condition
• 10 twin steer trucks	Good Condition
• 1x Hyster Fork lift	Good Condition

| Our Recent & Ongoing Projects

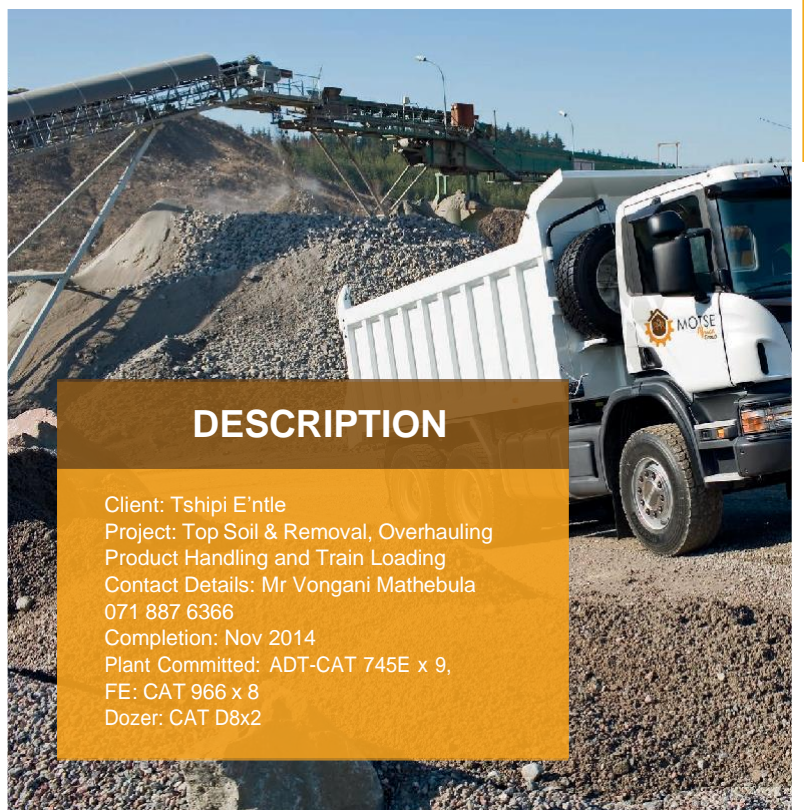
DESCRIPTION

Client: De Beers Mine
Project: Top Soil/Removal and building of slurry dams
Contact Details: Mr Hans Kgasago
056 216 8436 / 083 278 8138
Completion: Completed
Plant Committed: ADT: 15 EXC: 4, Dozer: 2
Grader: 2. Water truck: 1



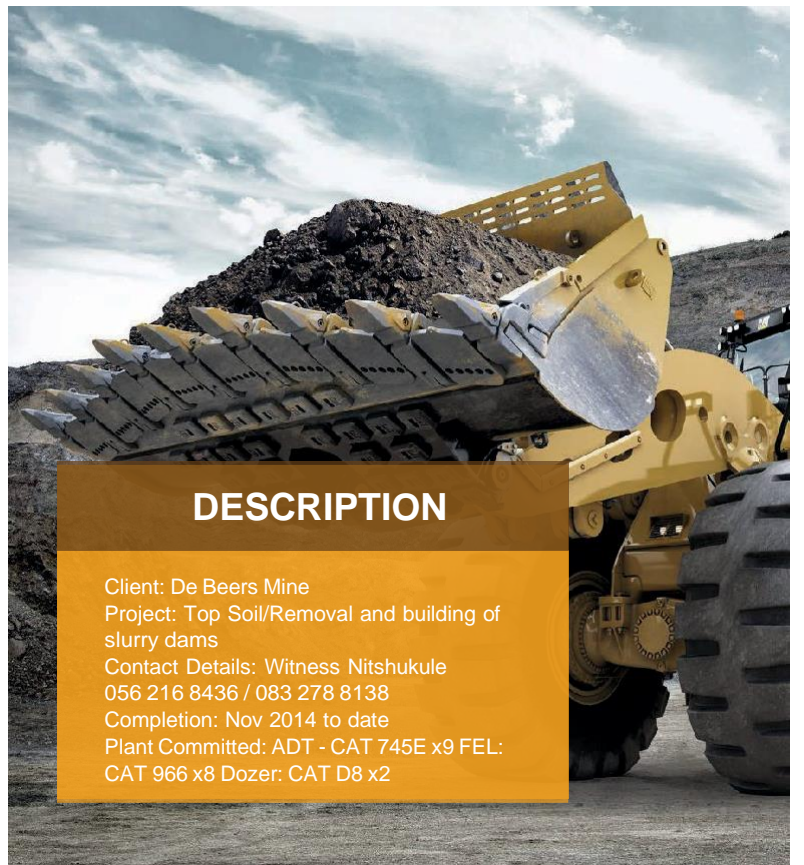
DESCRIPTION

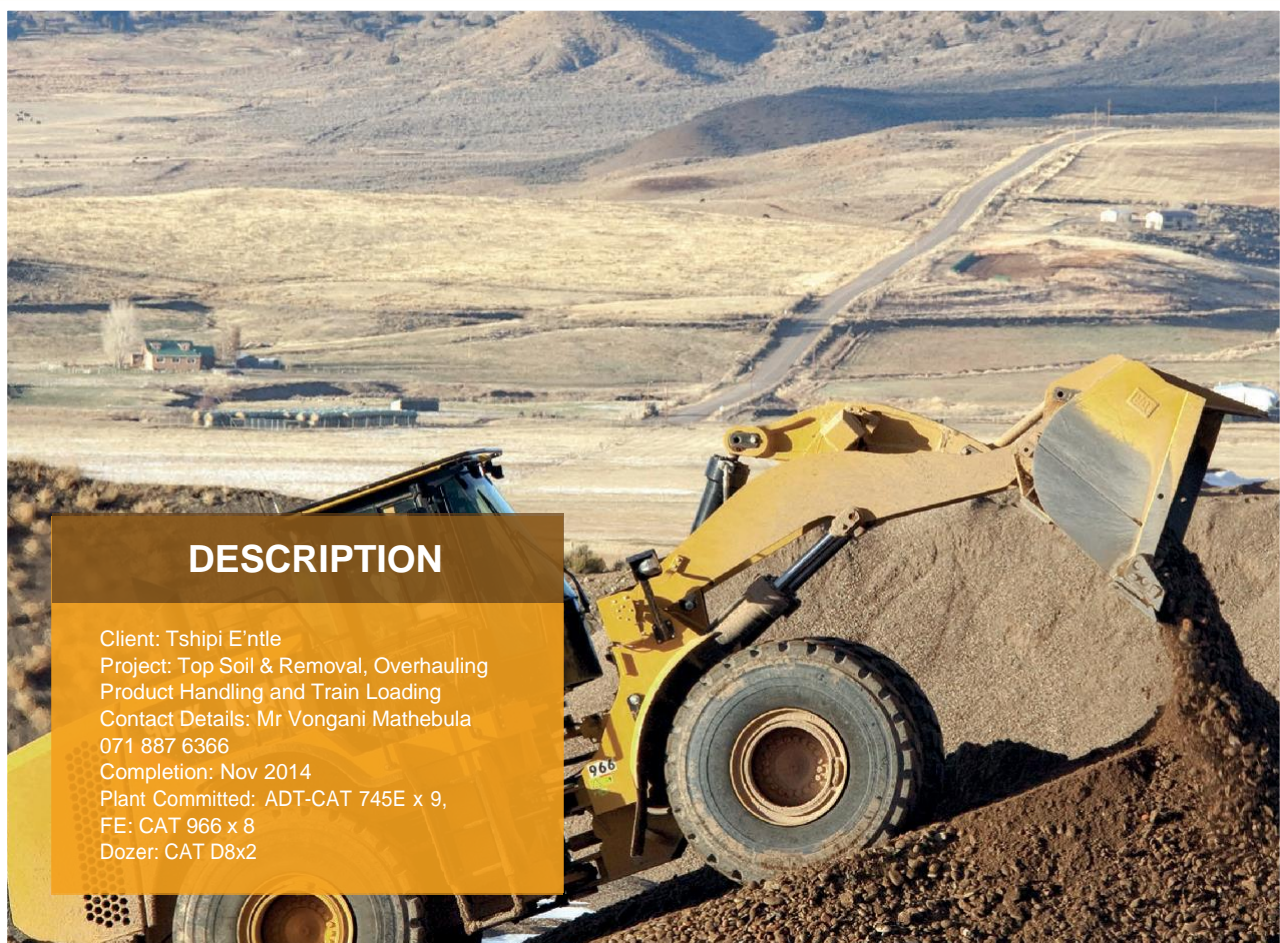
Client: Tshipi E'ntle
Project: Top Soil & Removal, Overhauling Product Handling and Train Loading
Contact Details: Mr Vongani Mathebula
071 887 6366
Completion: Nov 2014
Plant Committed: ADT-CAT 745E x 9, FE: CAT 966 x 8
Dozer: CAT D8x2



DESCRIPTION

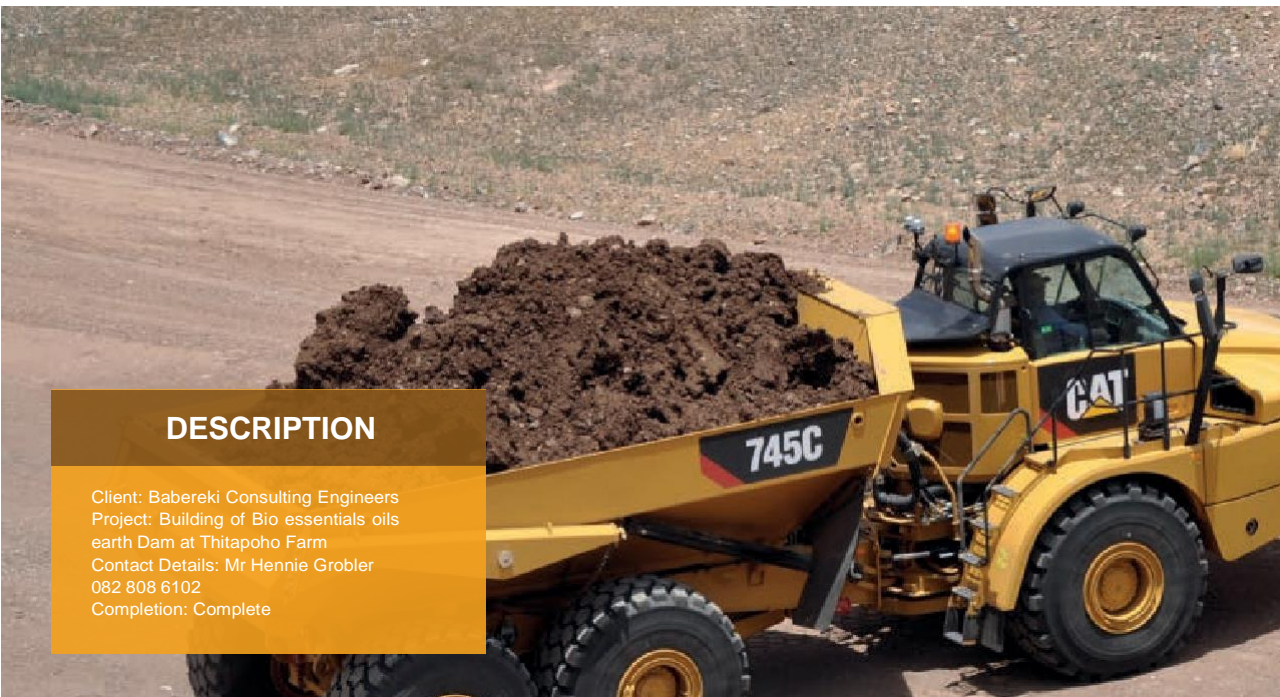
Client: De Beers Mine
Project: Top Soil/Removal and building of slurry dams
Contact Details: Witness Nitshukule
056 216 8436 / 083 278 8138
Completion: Nov 2014 to date
Plant Committed: ADT - CAT 745E x9 FEL: CAT 966 x8 Dozer: CAT D8 x2





DESCRIPTION

Client: Tshipi E'ntle
Project: Top Soil & Removal, Overhauling
Product Handling and Train Loading
Contact Details: Mr Vongani Mathebula
071 887 6366
Completion: Nov 2014
Plant Committed: ADT-CAT 745E x 9,
FE: CAT 966 x 8
Dozer: CAT D8x2



DESCRIPTION

Client: Babereki Consulting Engineers
Project: Building of Bio essentials oils
earth Dam at Thitapoho Farm
Contact Details: Mr Hennie Grobler
082 808 6102
Completion: Complete

We are proud to present

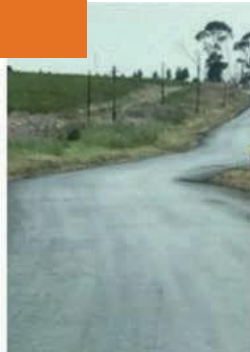
Some of our clients



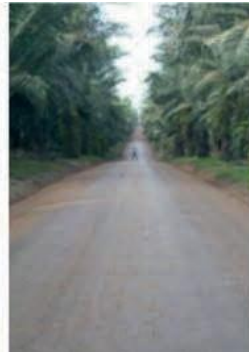
DUST SUPPRESSION SOLUTION



HYDROGEL



DUSTBINDER



ROADBINDER



DUSTSKIN



DUSTSKIN
MICRO

- A blend of polymers and surfactants
- Makes water last up to 4 times longer
- Suitable for primary, secondary roads and ramps
- Dosed at 1:1000 in the water truck
- Dosed at 0.05L/m² to 0.1L/m² per month
- 2 to 5 applications in dayshift
- Reduced Grading

- Bitumen Emulsion
- Wet Weather Applicable
- Used for construction and maintenance
- Suitable for use on any existing surface and compatible with existing road products that may have been used

- Lignin Base Emulsion
- Best In dry weather
- Used for construction and maintenance
- Suitable for use on any existing surface and compatible with existing road products that may have been used
- Easily maintained as product softens with moisture
- Can be washed off equipment with water
- Produces very strong wearing surface especially in dry environments
- Suitable for primary and secondary roads



Mobile Monitor



Results

Colour	Scale (mg/m ³)	Associated PDM Picture	Comments
Blue	0.00 – 0.50		- No visible dust produced by haul truck - Just watered - Operable
Green	> 0.50 – 1.25		- Low levels of visible dust produced by haul truck - Does not require watering - Operable
Yellow	> 1.25 – 1.56		- Medium levels of visible dust produced by haul truck - Requires immediate watering
Orange	> 1.56 – 3.25		- 80% Dust Control Efficiency Reached
Red	> 3.25 – ∞		- Extreme levels of visible dust produced by haul truck - Inoperable, Unsafe



Mobile Monitor



This image shows a full page of white paper with horizontal dotted lines. The lines are evenly spaced and run across the width of the page, providing a guide for handwriting practice. There are no margins, text, or other markings on the page.

Notes





MOTSE
Africa
Group



Head office:

12 Bukes Str | Kroonstad 9500

Regional Offices:

52 Maree Str | Riebeeckstad | Welkom 9459

107 Kellner Street | Unit 6 Westdene | Bloemfontein 9300



T: +27(0) 76 244 7689 | +27(0) 51 430 1104

F: 086 605 7243



info@motsegroup.co.za